



NORTH WICKLOW
EDUCATE TOGETHER
SECONDARY SCHOOL

ANNUAL ADMISSION NOTICE for 2024 - 2025

Admission Policy and Application Form

A copy of the school's **Admission Policy** for the 2024 - 2025 academic year
is available as follows:

To download at www.nwetss.ie or on request by emailing office@nwetss.ie

Please contact the school office if you do not have online access.

PART 1 - Admissions to the 2024 - 2025 academic year

Application and Decision Dates for admission to 2024 - 2025

The following are the dates applicable for admission to First Year:

1. The school will commence accepting online applications for admission from	Tuesday 3rd October 2023 at 10am
2. The school shall cease accepting online applications for admission on	Tuesday 24th October 2023 at 4pm
3. The date by which applicants will be notified of the decision on their application is	Between 13th and 20th November 2023
4. The date by which applicants must confirm acceptance of an offer of admission by returning the completed school enrolment form is	Thursday 30th November 2023

Note: applications made after Tuesday 24th October 2023 at 4pm will be processed as late applications; the school will consider and issue decisions on late applications in accordance with the school's Admission Policy.

Failure of an applicant to accept an offer by Thursday 30th November may result in the offer being withdrawn.

Other Year Groups Application for admission to 2024 - 2025

The following are the dates applicable for admission to other year groups – Second to Sixth Year.

1. The school will commence accepting applications for admission to other year groups on	Monday 25 th March 2024
2. The school shall cease accepting applications for admission to other year groups on	Friday 3 rd May 2024
3. The date by which applications will be notified of the decision on their application	Friday 31 st May 2024
4. The period by which applicants must confirm acceptance of an offer of admission is	Within 14 days of offer.

Failure of an applicant to accept an offer within 14 days from the date the school offers a place may result in the offer being withdrawn.

Maximum number of places in each year group in 2024 - 2025

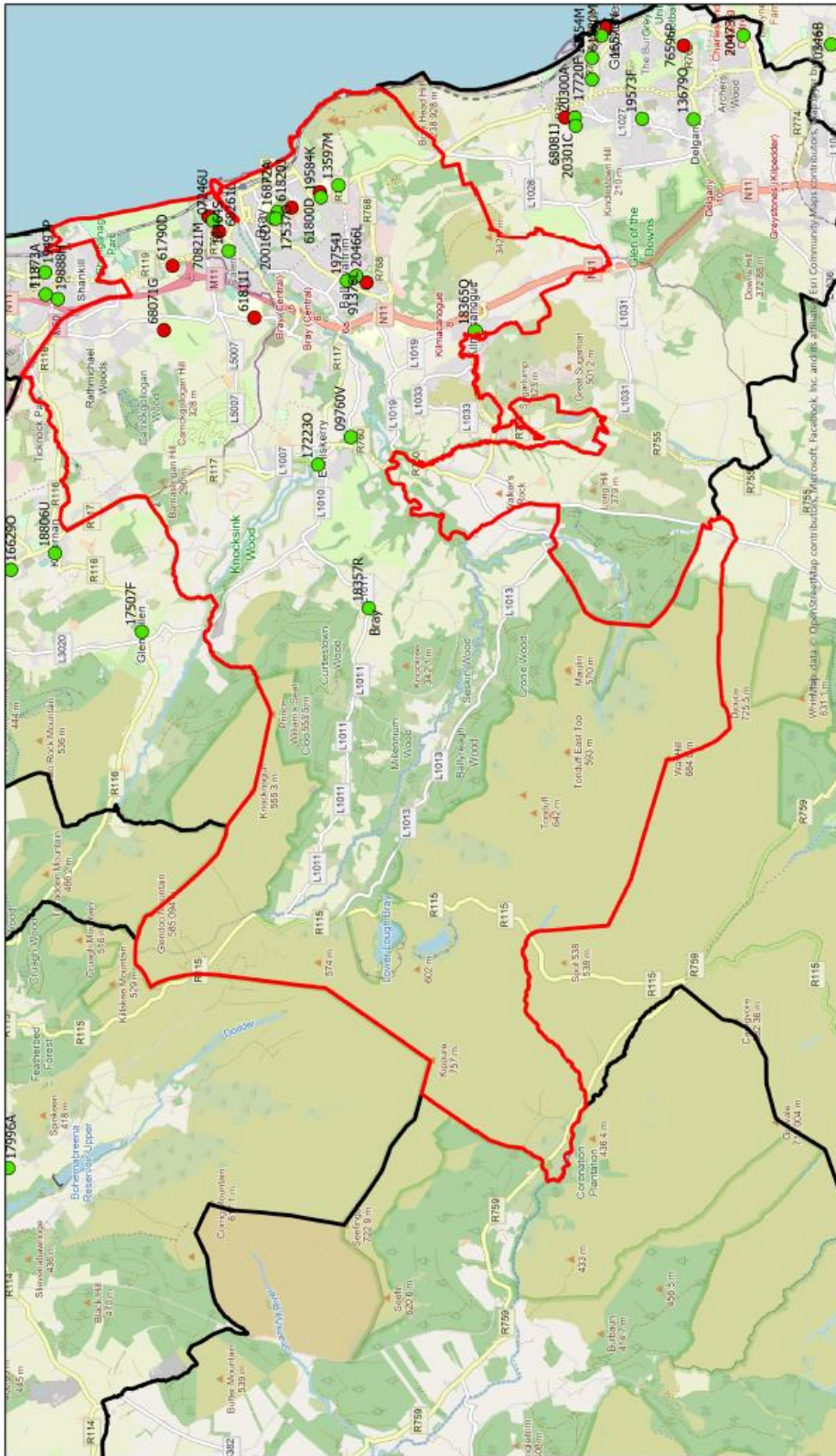
First Year	42
Second Year	60
Third Year	60
Transition Year	60
Fifth Year – Leaving Certificate Year 1	60
Sixth Year – Leaving Certificate Year 2	60
Sixth Year – Leaving Cert Applied (LCA) – Year 2 LCA is offered every other year	16

Special Class Application and Decision Dates for admission to 2024 - 2025

Please note: Students must have been offered and have accepted a place in the school before they can apply for a place in the Special Class. Please see the school's Admission Policy 2024 - 2025 (Appendix 2) for further information.

Appendix 1

Catchment area as defined in Priority 2: “Bray”, “Kilternan” and “Ballybrack/Shankill” in the DES map below



Bray School Planning Area
● Primary Schools
● Post Primary Schools
 School Planning Areas



 An tAire Leasaithe
 Department of Education

0 1.18 2.35 4.7 Kilometers